

# PHENOMENOLOGICAL APPROACH OF FIRST-EPISEDE PSYCHOSIS

## Experiential disturbances and traumatic experience

(1)(2) Auriane André, Ph.D., Pr. Khadija Chahraoui, Ph.D. (3)

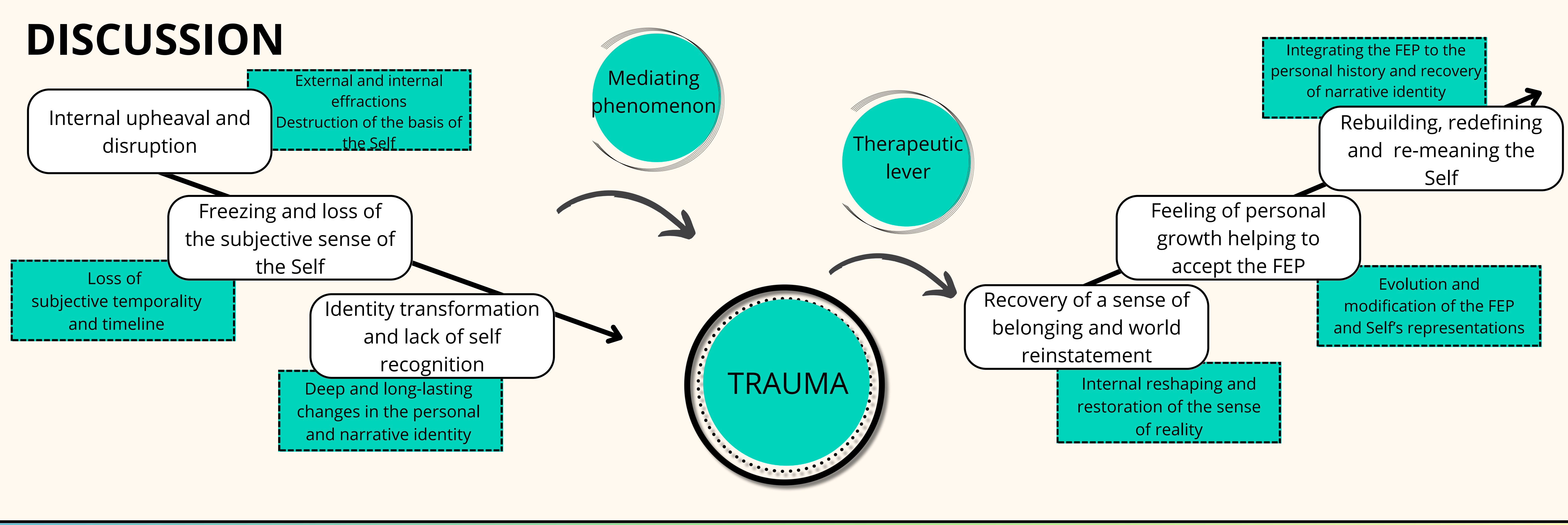
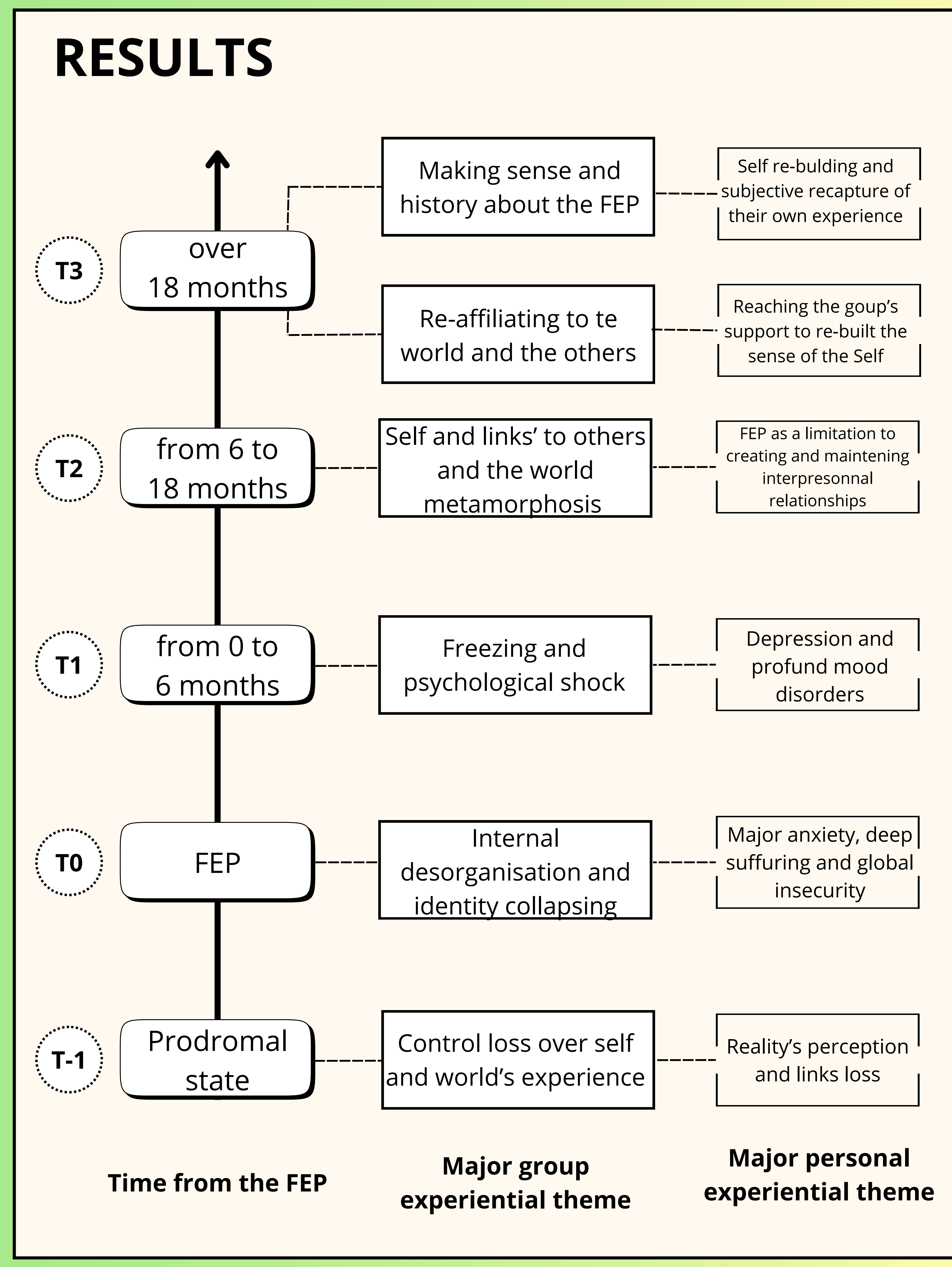
(1) Psychology laboratory Psy-DREPI UR 74-58, University of Burgundy Europe, Dijon, FRANCE  
 (2) Psychosocial Rehabilitation Referent Center of Burgundy (C2RB), la Chartreuse Hospital, Dijon, FRANCE  
 (3) Psychology laboratory Psychopathology and changing processes, Paris 8 University, Paris, FRANCE

### RATIONALE

- Multidimensional impacts of a first episode of psychosis (FEP) : psychiatric, biological and functional (1)
- FEP also leads to subjective damage and experiential disturbances affecting the Self, the world's and the others' perception (1)
- Negative impacts of experiential disturbances on long-term prognosis : needs for early identification and intervention (2)
- Trauma as a widely observed consequence of FEP but not fully characterised : PTSD or subjective and affective dimensions ? (3)
- Few international and French research studies (2)

### METHODS

- Qualitative and prospective study, phenomenological approach
- n = 15 ; age : 18-35 ; 1 to 3 psychotic episodes
- 2 semi-directive research interviews : 1) longitudinal experience of FEP (from prodromes to 2 years after the FEP), perceived subjective impacts 2) etiological hypotheses, representations and beliefs, perceived ressources
- 2 qualitative analysis : Bardin's content analysis (4) and Interpretative Phenomenological Analysis (5)



### OPENINGS

- The subjective impacts of FEP seems to be organised in a dynamic movement integrating identity profound alterations, sideration and tranformation of the Self, the links to the world and the others
- Those disturbances can cause long-term trauma with both clinical manifestations and subjective dimensions but more researches are needed

Références bibliographiques  
 (1) Parnas, J., & Handest, P. Phenomenology of anomalous self-experience in early schizophrenia. Comprehensive psychiatry, 2003, 44(2), 121-134. 2) Fusar-Poli, P., Estradé, A.,...& Maj, M. The lived experience of psychosis: a bottom-up review co-written by experts by experience and academics. World Psychiatry, 2022, 21(2), 168-188. 3) Dunkley et al. (2015) 4) Bardin, L. L'Analyse de contenu. PUF. Paris, 2007. 5) Antoine, P., & Smith, J. A. Saisir l'expérience : Présentation de l'analyse phénoménologique interprétative comme méthodologie qualitative en psychologie. Psychologie Française, 2016.